



Water Kit

For

Skid Steer Loaders

Operator's Manual

Set-Up Assembly

Maintenance

Parts Information



Read this Manual Before Use

TABLE OF CONTENTS

SAFETY	3-4
SERIAL NUMBER/DECAL LOCATION	5
SET-UP ASSEMBLY	6-15
USER'S MOUNTING INSTRUCTIONS	16-17
OPERATING INSTRUCTIONS	18
ROUTINE MAINTENANCE	19-20
BOLT TORQUE INFORMATION	20
PARTS INFORMATION	21-25
GENERAL SPECIFICATIONS	26
WARRANTY	31

REFERENCE INFORMATION

Write the serial number for your attachment in the spaces below. Always refer to this serial number when calling for service or parts.

Serial Number.....

YOUR ATTACHMENT DEALER

ADDRESS:

PHONE:

CONTACT:

NOTE: *Erskine Attachments LLC reserves the right to make improvements in design or changes in specifications at any time without notice and without incurring any obligations to install them on units previously sold.*

SAFETY

DO NOT use or perform maintenance on this machine until this manual has been read and understood. In addition, read the Operation and Maintenance Manual(s) pertaining to the attachment and the attachment carrier (“Loader”).

The user is responsible for inspecting the machine daily, and for having parts repaired or replaced when continued use of the machine would cause damage, excessive wear to other parts or make the machine unsafe for continued operation.

If an operating procedure, tool device, maintenance or work method not specifically recommended is used, you must satisfy yourself that it is safe for you and others. You must also ensure that the attachment will not be damaged or made unsafe by the procedures you choose.

Erskine Attachments LLC cannot anticipate every possible circumstance that might involve potential hazard. The safety messages found in this manual and on the machine are therefore not all inclusive.

Throughout this manual, reference may be made to the left hand (LH) or right hand (RH) side. These terms are used as viewed from the operator’s seat facing front.

The signal words **CAUTION**, **WARNING**, or **DANGER** are used to indicate hazards.

⚠ CAUTION Indicates a potentially hazardous situation which, if not avoided, may result in minor or moderate injury.

⚠ WARNING Indicates a potentially hazardous situation which, if not avoided, could result in death or serious injury.

⚠ DANGER Indicates a potentially hazardous situation which, if not avoided, will result in death or serious injury.

The word **IMPORTANT** is used in the text when immediate damage will occur due to improper technique or operation.

The word **NOTE** is used to convey information that is out of context with the manual text; special information such as specifications, techniques, reference information, and other information of a supplementary nature.

Improper operation can cause serious injury or death.

Pre-operation

- This machine is designed for spraying water for dust suppression only. **NEVER** use this machine for any other purpose.
- Occupational use of this attachment may be subject to OSHA regulations specific to respirable dusts, depending on the work application. Refer to OSHA for more information about controlling dust exposure.
- Read the operator's manuals for the "Skid Steer Loader" and the "primary attachment" that the water kit will be used with. **NEVER** allow untrained people to operate.
- Operating instructions must be given to everyone before operating this attachment and at least once a year thereafter in accordance with OSHA regulations.
- **NEVER** exceed the maximum recommended input power or speed specifications for the attachment. Over-powering or over-speeding the attachment may cause personal injury and/or machine damage.
- Keep all shields, guards, and covers in place.
- Do not modify equipment or add attachments that are not approved by Erskine Attachments LLC.
- Use adequate safety warning lights and devices as required by local regulations. Obey all local laws and regulations regarding machine operation on public property.

Operation

- Always wear eye protection that meets ANSI z87.1 standard or use with a loader enclosure that provides similar protection.
- Check and be sure all operating controls are in neutral before starting the engine.
- **NEVER** operate near embankments or terrain that is so steep that rollover could occur.
- Always stay in the operator position when using the attachment.
- Before leaving the operators position, shut down the primary attachment, lower the attachment to rest flat on the ground, turn off the water kit, stop engine, set park brake, and wait for all motion to stop.

Maintenance

- **NEVER** make adjustments, lubricate, clean, or perform any service on the machine while it is in operation.
- Make sure the attachment is serviced on a daily basis. Improper maintenance can cause serious injury or death in addition to damage to the attachment and/or your equipment.

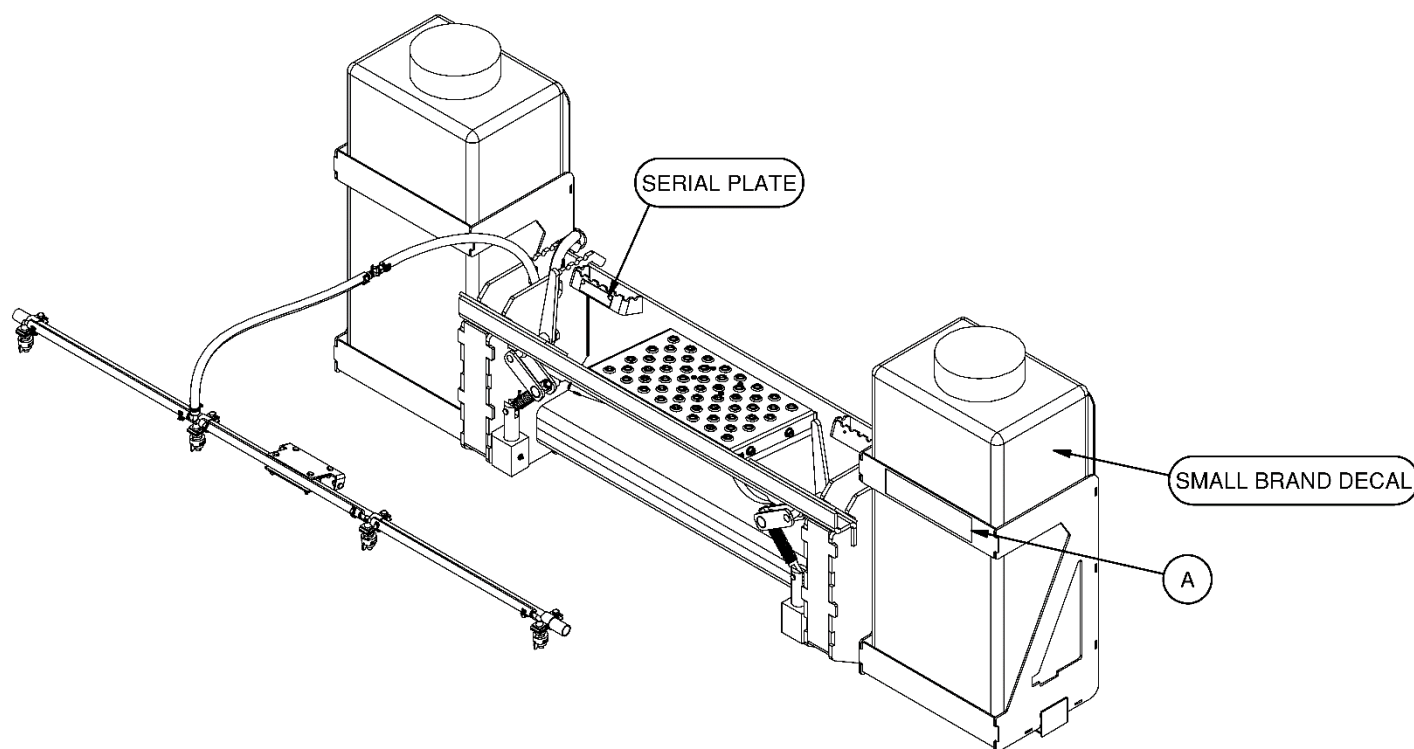
SERIAL NUMBER AND SAFETY DECAL LOCATIONS

Serial Number Location:

It is important to refer to the serial number of the attachment when making repairs or ordering parts. Early or later models (identification made by serial number) may use different parts, or it may be necessary to use different procedures in doing a specific operation.

Safety Decals Locations:

The locations of safety decals are shown. If these decals are missing, damaged, or painted over they must be replaced. Call Erskine Attachments LLC (218-435-4045) for replacement decals.



A

WARNING

Improper disconnection of water kit can result in serious injury or death.

To separate water kit from primary attachment, always make sure the water kit is attached to the loader. Without support of the loader, the water kit can tip over, crushing you or others.

318675

Part Number: 318675

Location: On front of left tank frame

Quantity: 1

Small Brand Decal

Location: On outside of water tanks

Quantity: 2

SET-UP ASSEMBLY

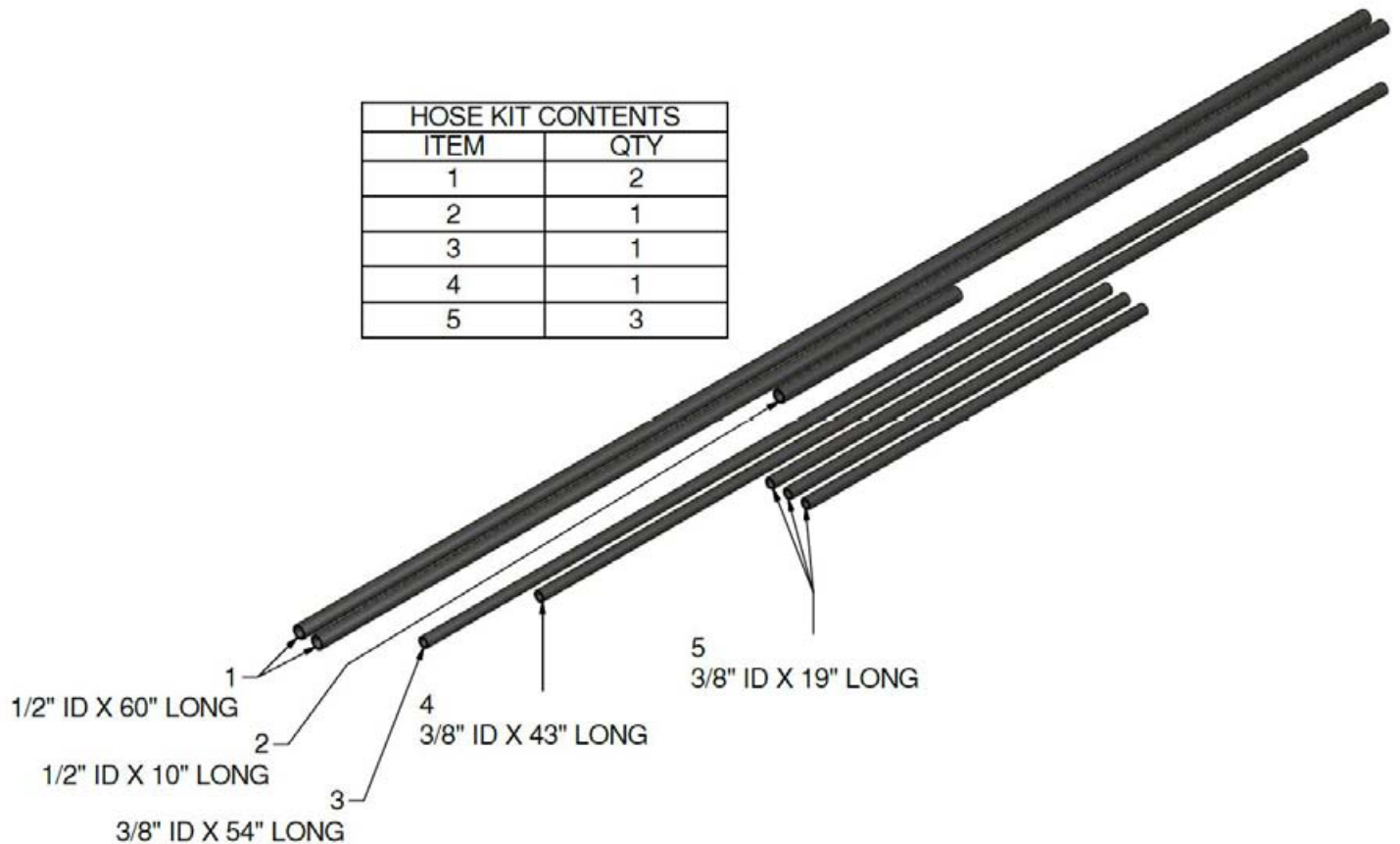
The water kit requires some assembly after shipping. Verify that all parts are included. If any parts are missing, contact Erskine Attachments LLC (218-435-4045) for replacements.

The assembly procedure will refer to the following components and their corresponding item numbers.

NOTE: The 1/2" inside diameter hoses are used on the suction side of the water pump only, and the 3/8" inside diameter hoses are used on the pressure side of the water pump only.

Make sure all barbed fittings are secured with the supplied hose clamps.

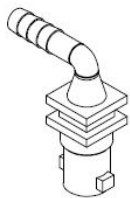
Threaded swivel fittings should be tightened by hand. Do not over-tighten threaded swivel fittings.



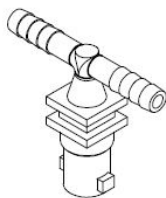
SET-UP ASSEMBLY



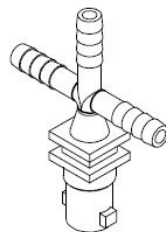
6
NOZZLE CLAMP
QTY: 4



7
SINGLE NOZZLE BODY
QTY: 2



8
DOUBLE NOZZLE BODY
QTY: 1



9
TRIPLE NOZZLE BODY
QTY: 1



10
TIP STRAINER
QTY: 4



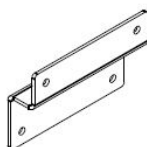
11
RUBBER GASKET
QTY: 4



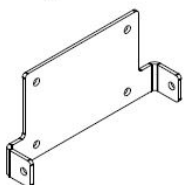
12
SPRAY TIP
QTY: 4



13
NOZZLE CAP
QTY: 4



14
"S" BRACKET
QTY: 1

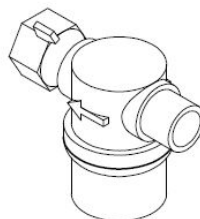


15
EAR BRACKET
QTY: 1

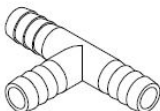
16
TUBE
QTY: 1



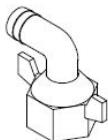
17
1/2" BARB X 1/2" MPT ELBOW
QTY: 2



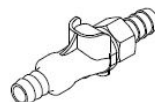
21
LINE STRAINER
QTY: 1



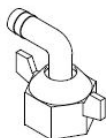
18
1/2" BARB TEE
QTY: 1



19
1/2" BARB SWIVEL
QTY: 1



22
3/8" BARB QUICK COUPLER
QTY: 1



20
3/8" BARB SWIVEL
QTY: 1



23
HOSE CLAMP
QTY: 16

***Not to scale**

SET-UP ASSEMBLY

Nozzle Body Assembly

1. Insert the brass spray tip (12) into the nozzle cap (13).
2. Insert the rubber gasket (11) into the nozzle cap on top of the inlet side of the brass tip.
3. Insert the tip strainer (10) into the nozzle body (7, 8, or 9). The mesh in the strainer goes inside of the nozzle body.
4. Align the notches on the nozzle body with the recesses in the nozzle cap, and twist one quarter turn to secure the assembly.
5. Repeat all steps for the three remaining nozzle body assemblies.



SET-UP ASSEMBLY



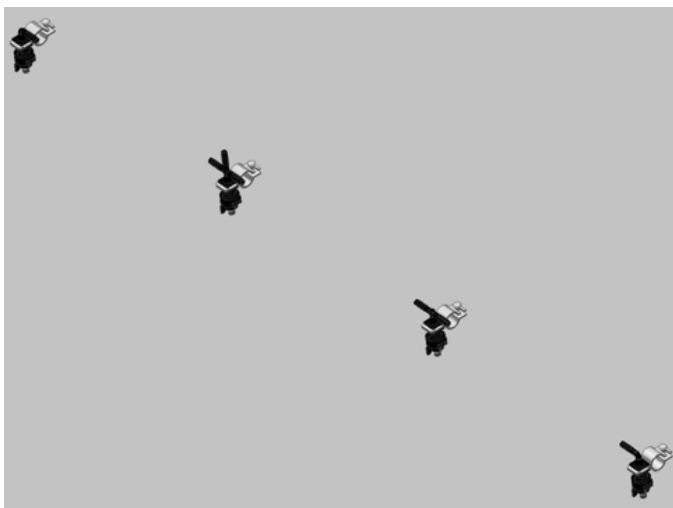
6. Loosen the screw in the nozzle clamp and insert the nozzle body. Tighten the screw to secure the nozzle body. Repeat for the three remaining nozzle body assemblies.

NOTE: The two single nozzle bodies should have opposite orientations in the nozzle clamps.



Hose Assembly

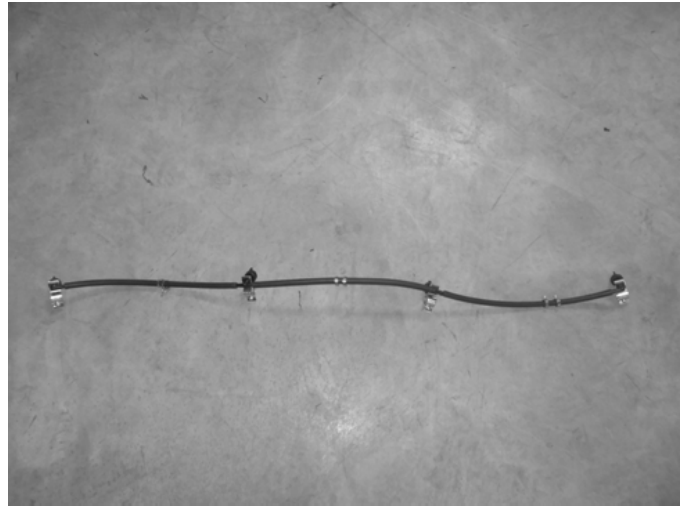
1. When assembling the hoses, it is helpful to place both hose clamps around the hose before inserting any fittings. Use the three short 3/8" ID hoses (5) to connect the nozzle bodies.



The fittings order from right to left (as viewed from sitting in the loader's operator's seat) is as follows: single (7), triple (9), double (8), single (7).

SET-UP ASSEMBLY

2. Before tightening the hose clamps, adjust the orientation of the nozzle bodies so they are approximately aligned. Fine adjustments can be made later when the spray boom is mounted on the primary attachment (pick-up broom or angle broom).



3. Slide the hose clamp over the location of the barb on the fitting and tighten using a screwdriver or 1/4" nut driver. Tighten until snug.

IMPORTANT: Do not over-tighten. Over-tightening the hose clamp may damage the hose.



4. Remove the male plug from the coupler (22) and insert into one end of the longest 3/8" ID hose (3). Remember to use hose clamps. Insert the 3/8" swivel fitting (20) at the other end. Tighten hose clamps. This is the pump outlet hose.



SET-UP ASSEMBLY



5. Insert the female end of the coupler into one end of the last remaining 3/8" ID hose (4). Remember to use hose clamps. Connect the other end of the hose to the triple nozzle body. Tighten the hose clamps.



6. The spray boom hose assembly can now be mounted to the tube (16).

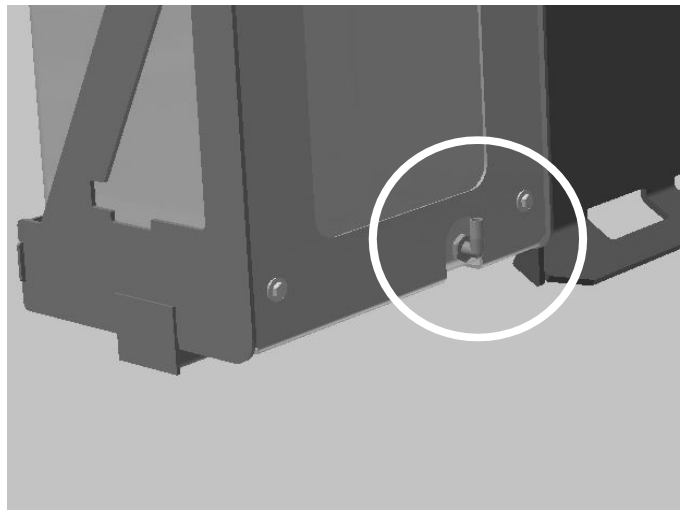


7. Connect the drop of the tee fitting (18) to the 1/2" swivel fitting (19) using the short 1/2" ID hose (2). Remember to use hose clamps. The fittings should be oriented as shown. This is the pump inlet hose.



SET-UP ASSEMBLY

8. Remove the plug from the outlet at the bottom of the water tank. Thread the 1/2" elbow fitting (17) into the outlet. The fitting may be oriented as shown, or angled slightly in towards the center of the attachment. Repeat for the other side.



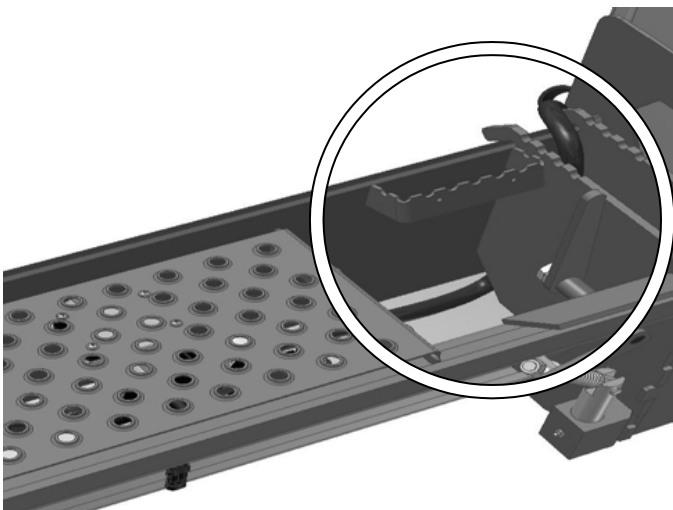
9. Run one of the long 1/2" ID hoses (1) through the hose guide. Remember to use hose clamps.



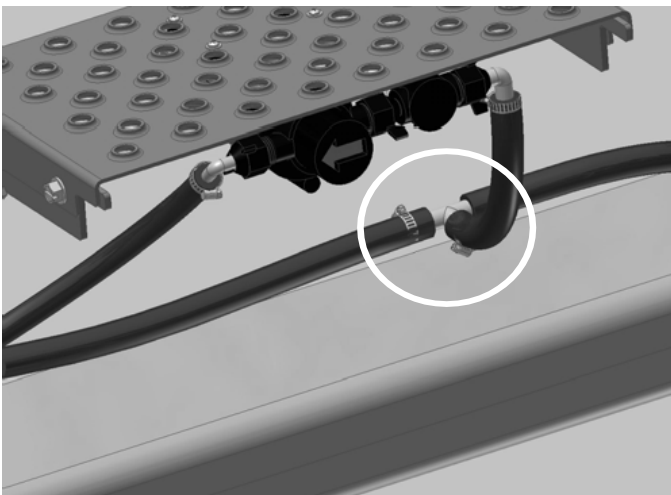
10. Connect the hose to the elbow fitting and tighten the hose clamp. Repeat for the other side.



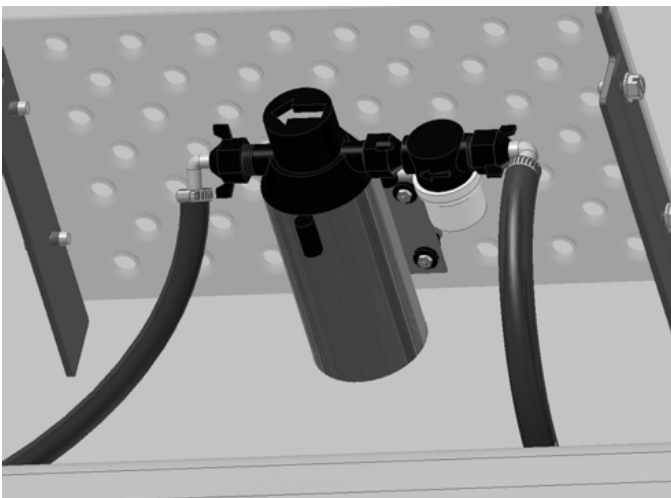
SET-UP ASSEMBLY



11. Run the other end of the tank outlet hose down through the vertical plates and out the chamfer towards the center of the attachment. Repeat for the other tank outlet hose.



12. Connect both tank outlet hoses to the tee of the pump inlet hose. Remember to use hose clamps. Tighten the hose clamps.

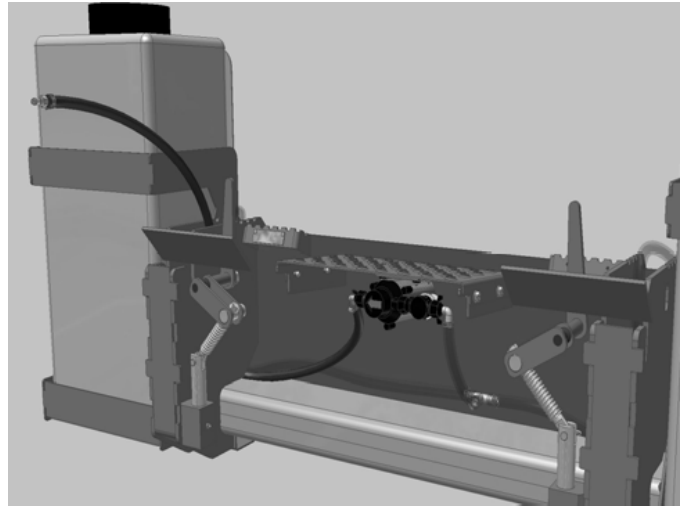


13. Thread the swivel end of the line strainer (21) onto the inlet side of the pump. The inlet of the pump is on the right-hand side (viewed from the front of the attachment). Thread the 3/8" swivel fitting from the pump outlet hose onto the outlet side of the pump.

IMPORTANT: Swivel fittings are designed to be hand tightened only. Over-tightening swivel fittings can damage the fitting and/or pump.

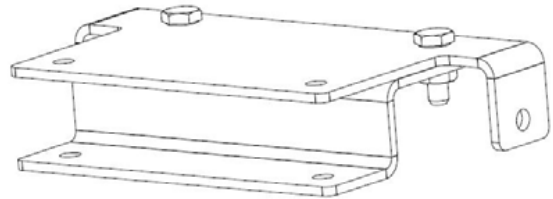
SET-UP ASSEMBLY

14. Run the pump outlet hose through the chamfer cut out on the right-hand side of the attachment and up between the vertical plates.

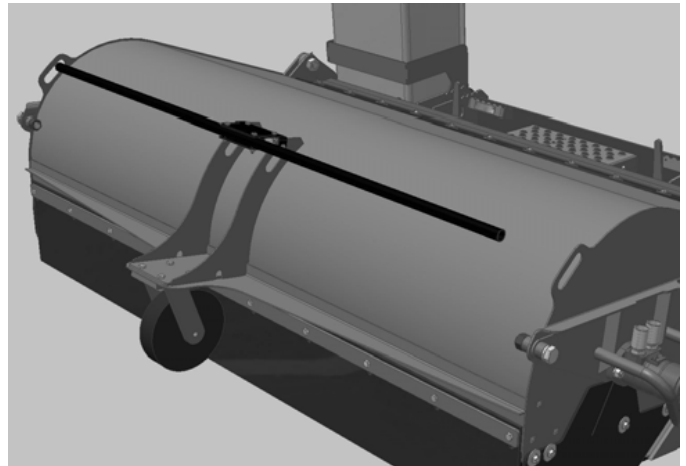


Mounting the Spray Boom to the Pick-Up Broom

1. Orient the brackets as shown. The long face of the "S" bracket is mated to the ear bracket. Bolt together using supplied 1/4" x 3/4" hardware.
2. Bolt the bracket to the pick-up broom gusset plates using the supplied 1/4" x 3/4" hardware as shown. If the pick-up broom does not have pre-cut holes, use the bracket as a template and drill a 9/32" hole in each gusset plate. Bolt the tube between the two brackets using the supplied 1/4" x 1-3/4" hardware.

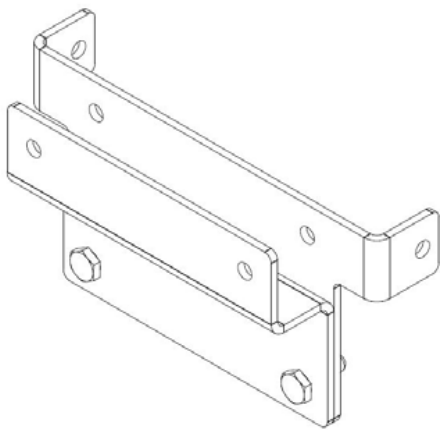


NOTE: Nozzle bodies are removed from image for clarity.

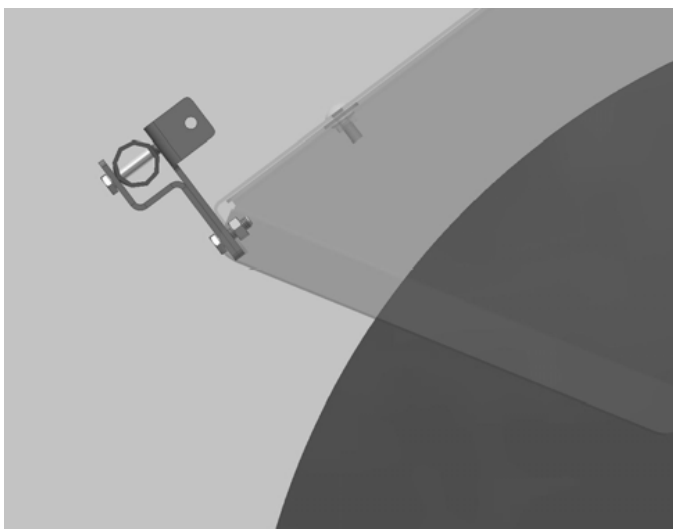


SET-UP ASSEMBLY

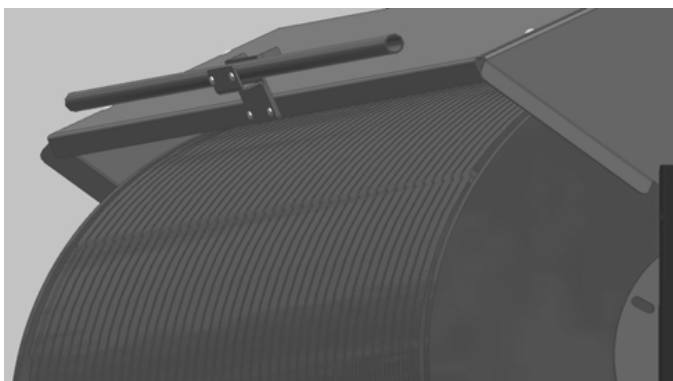
Mounting the Spray Boom to the Angle Broom



1. Orient the brackets as shown. The long face of the "S" bracket is mated to the ear bracket. Bolt both brackets to the hood of the angle broom using the supplied 1/4" x 3/4" hardware.



2. If the angle broom does not have pre-cut holes in the hood, use the bracket as a template and drill two 9/32" holes in the front lip of the hood. The brackets should be approximately centered on the angle broom hood. Bolt the tube between the two brackets using the supplied 1/4" x 1-3/4" hardware.



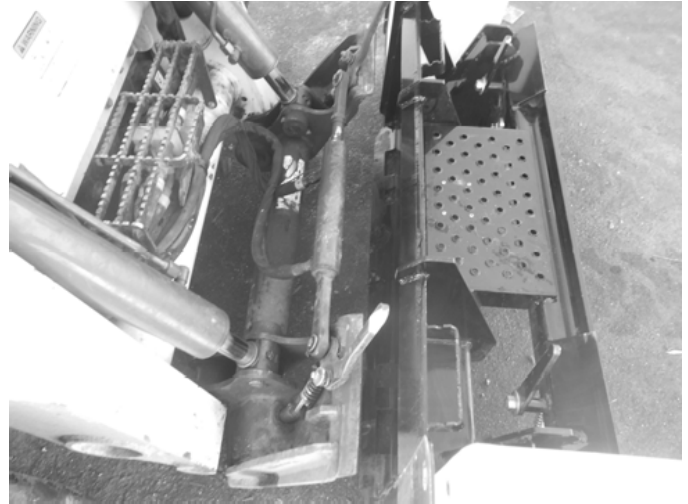
NOTE: Nozzle bodies are removed from images for clarity.

USER'S MOUNTING INSTRUCTIONS

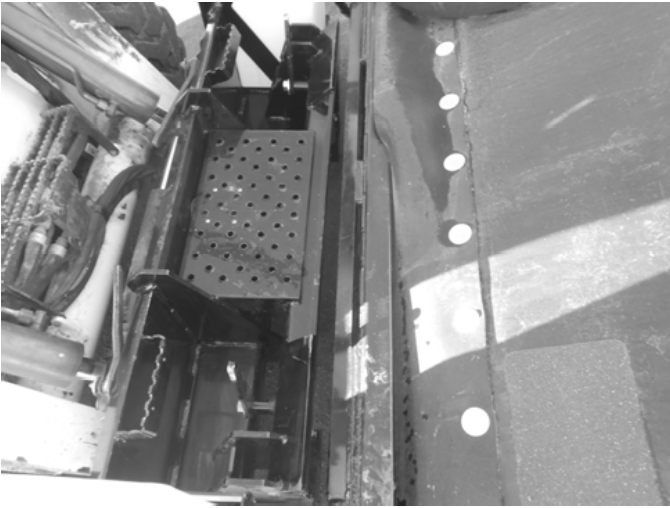
After the initial set-up assembly is completed use the following procedure to mount the attachment to the loader.

⚠ WARNING Levers must be fully down and locked. Failure to secure wedges or pins can allow the attachment to come off and cause injury or death.

1. Use the step, safety treads, and grab handles to get on and off the loader and attachment.
2. Sitting in the operator's seat, lower seat bar (if so equipped) and fasten the seat belt.
3. Drive the loader to the rear of the water kit. Put the loader quick attach coupler into the water kit mounting bracket.
4. Tilt the loader coupler backward a small amount until it is fully engaged in the water kit mounting bracket.
5. Stop the engine and engage the park brake.
6. Secure the coupler locking mechanism that attaches the attachment to the loader.



USER'S MOUNTING INSTRUCTIONS



7. Using a similar procedure, mount the primary attachment (pick-up broom, angle broom, etc.) to the front mounting bracket of the water kit. Secure the water kit coupler locking mechanism to lock the primary attachment to the water kit. Once secured, the water kit may remain connected to the primary attachment while disconnected from the loader.

⚠ WARNING Never attempt to disconnect the water kit from the primary attachment without the water kit being attached to the loader. Without the support of the loader while disconnecting from the primary attachment, the water kit can tip over, crushing you or others.

NOTE: See the primary attachment's operator's manual for instructions on connecting hydraulic hoses and wire harness, if applicable.



8. Connect the water kit pump outlet hose to the spray boom.

9. Connect the pump wire harness to the loader's 12V receptacle.

IMPORTANT: The 12V receptacle is not mounted on the loader lift arms, therefore the distance between the 12V socket and the pump will change as the lift arms are raised. Be sure there is sufficient slack when dumping the pick-up broom. Check the harness slack through the full range of intended motion of the primary attachment before operating. Proper wire harness routing is the responsibility of the owner and/or operator. Pinched or stretched wire harnesses are not covered under warranty.



Mounting is now complete and the water kit is ready for operation. Use reverse order of above instructions to dismount the water kit from the loader.

OPERATING INSTRUCTIONS

1. With the operator in the seat of the loader, the seatbelt fastened, and the seat bar lowered (if so equipped), start the engine.
2. Turn the water pump on and off by plugging and unplugging the 12V plug on the water kit wire harness. If the water kit is being run for the first time, or if it was previously run until empty, the pump may need to prime before it starts spraying. The pump will self-prime and begin to spray in less than 1 minute.

IMPORTANT: The pump can be run dry for short periods of time without damage. This should only be done when the pump is priming. Running the pump dry for extended periods of time will lead to damage, and will void the pump warranty.

NOTE: The water kit holds 40 gallons of water, giving approximately 40 minutes of continuous spraying time. With full tanks, the water kit will add approximately 950 lbs. to the weight of the primary attachment.

NOTE: Surfactant is approved for use in this water kit. Surfactant makes the water “wet” the surface better by reducing its cohesion. Certain applications may require its use.



ROUTINE MAINTENANCE

⚠ WARNING Lower the attachment to rest on the ground, shut down the engine, relieve the hydraulic pressure to the primary attachment, set the park brake, and wait for all motion to stop before leaving the operator's seat to perform service of any kind.

It is the operator's responsibility to make daily inspections of the loader and attachment for damage, loose bolts, fluid leaks, or anything else that could cause a potential service or safety problem. Preventive maintenance is the easiest and least expensive type of maintenance.

IMPORTANT: Bolts and set screws can loosen after initial usage. After the first hour of operation check all bolts and set screws.

LUBRICATION

Lubrication Legend



Multipurpose spray lube



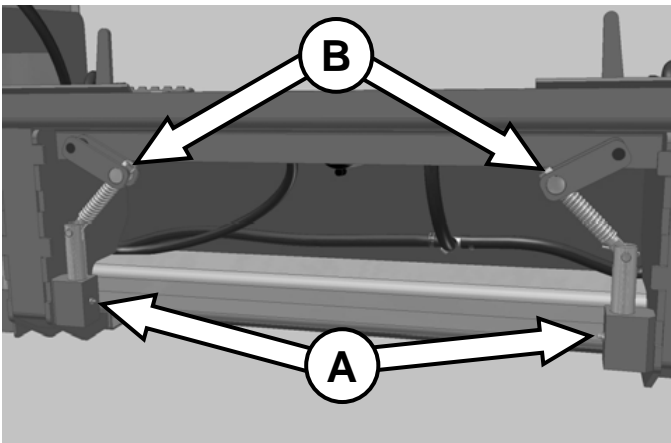
No. 2 Lithium base gun grease



Clean engine oil



Intervals at which lubrication is required



Locking Mechanism

Use No. 2 lithium base gun grease when lubricating all attachment grease fittings.

Constant lubrication of the coupler wedges is not critical. However, they must move freely in order to correctly lock into place. If the pins start to stick, add grease to the grease zerks **[A]** in the pin blocks.

Tension on the handles can be adjusted by slightly tightening or loosening the lock nuts **[B]** that secure the handles to the linkage levers.



Strainers

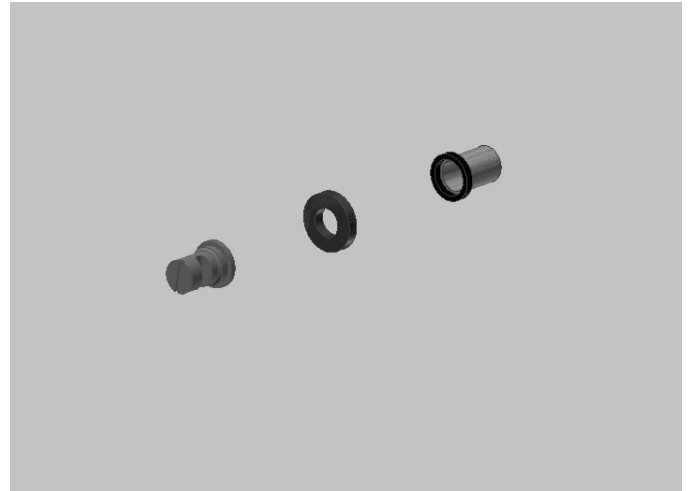
Check and clean the line strainer every **8 hours** of operation.

Check and clean the tip strainers every **40 hours** of operation.

IMPORTANT: All strainers should be free from debris. Clogged strainers will block flow and may damage the pump.

ROUTINE MAINTENANCE

The spray tips will wear over time depending on the abrasiveness of particles in the water supply. The tip strainers and gaskets should also be replaced at this time. The tip replacement kit part number is **318602**. Each kit contains one tip, one gasket, and one strainer. Specify the number of tips that need to be replaced when ordering.

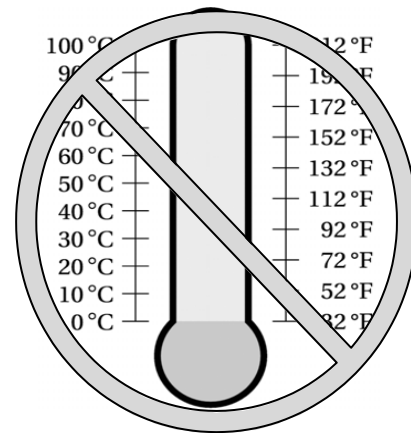


The tanks should be kept free of sediments. Periodically check and rinse all sediments from the bottoms of the tanks.

Do not allow water to freeze in the water kit spraying system. If the water kit is to be stored outdoors and the temperature is expected to reach below freezing, drain the water from the tanks and flush the system with antifreeze suitable for fresh water supply systems.

For extended outdoor storage, remove the tanks, pump, hoses, tips, and all fittings. Store these components in a climate controlled area.

IMPORTANT: Water freezing in the lines will damage the pump and may cause hoses and fittings to rupture.



Torque-Tension Relationships for SAE J429 Grade Bolts

Nominal Thread Size	SAE J429 Grade 2			SAE J429 Grade 5			SAE J429 Grade 8		
	Clamp Load (lbs)	Tightening Torque		Clamp Load (lbs)	Tightening Torque		Clamp Load (lbs)	Tightening Torque	
		K = .15	K = .20		K = .15	K = .20		K = .15	K = .20
Unified Coarse Thread Series									
1/4-20	1,300	49 in-lbs	65 in-lbs	2,000	75 in-lbs	100 in-lbs	2,850	107 in-lbs	143 in-lbs
5/16-18	2,150	101	134	3,350	157	210	4,700	220	305
3/8-16	3,200	15 ft-lbs	20 ft-lbs	4,950	23 ft-lbs	31 ft-lbs	6,950	32.5 ft-lbs	44 ft-lbs
7/16-14	4,400	24	30	6,800	37	50	9,600	53	70
1/2-13	5,850	36.5	49	9,050	57	75	12,800	80	107
9/16-12	7,500	53	70	11,600	82	109	16,400	115	154
5/8-11	9,300	73	97	14,500	113	151	20,300	159	211
3/4-10	13,800	129	173	21,300	200	266	30,100	282	376
7/8-9	11,425	125	166	29,435	321	430	41,550	454	606
1-8	15,000	187.5	250	38,600	482.5	640	54,540	680	900
Unified Fine Thread Series									
1/4-28	1,500	55 in-lbs	75 in-lbs	2,300	85 in-lbs	115 in-lbs	3,250	120 in-lbs	163 in-lbs
5/16-24	2,400	112	150	3,700	173	230	5,200	245	325
3/8-24	3,600	17 ft-lbs	22.5 ft-lbs	5,600	26 ft-lbs	35 ft-lbs	7,900	37 ft-lbs	50 ft-lbs
7/16-20	4,900	27	36	7,550	42	55	10,700	59	78
1/2-20	6,600	41	55	10,200	64	85	14,400	90	120
9/16-18	8,400	59	79	13,000	92	122	18,300	129	172
5/8-18	10,600	83	110	16,300	128	170	23,000	180	240
3/4-16	15,400	144	193	23,800	223	298	33,600	315	420
7/8-14	12,610	138	184	32,480	355	473	45,855	500	668
1-12	16,410	205	273	42,270	528	704	59,670	745	995

Clamp load estimated as 75% of proof load for specified bolts.

Torque values for 1/4 and 5/16 inch series are in inch-pounds. All other torque values are in foot-pounds.

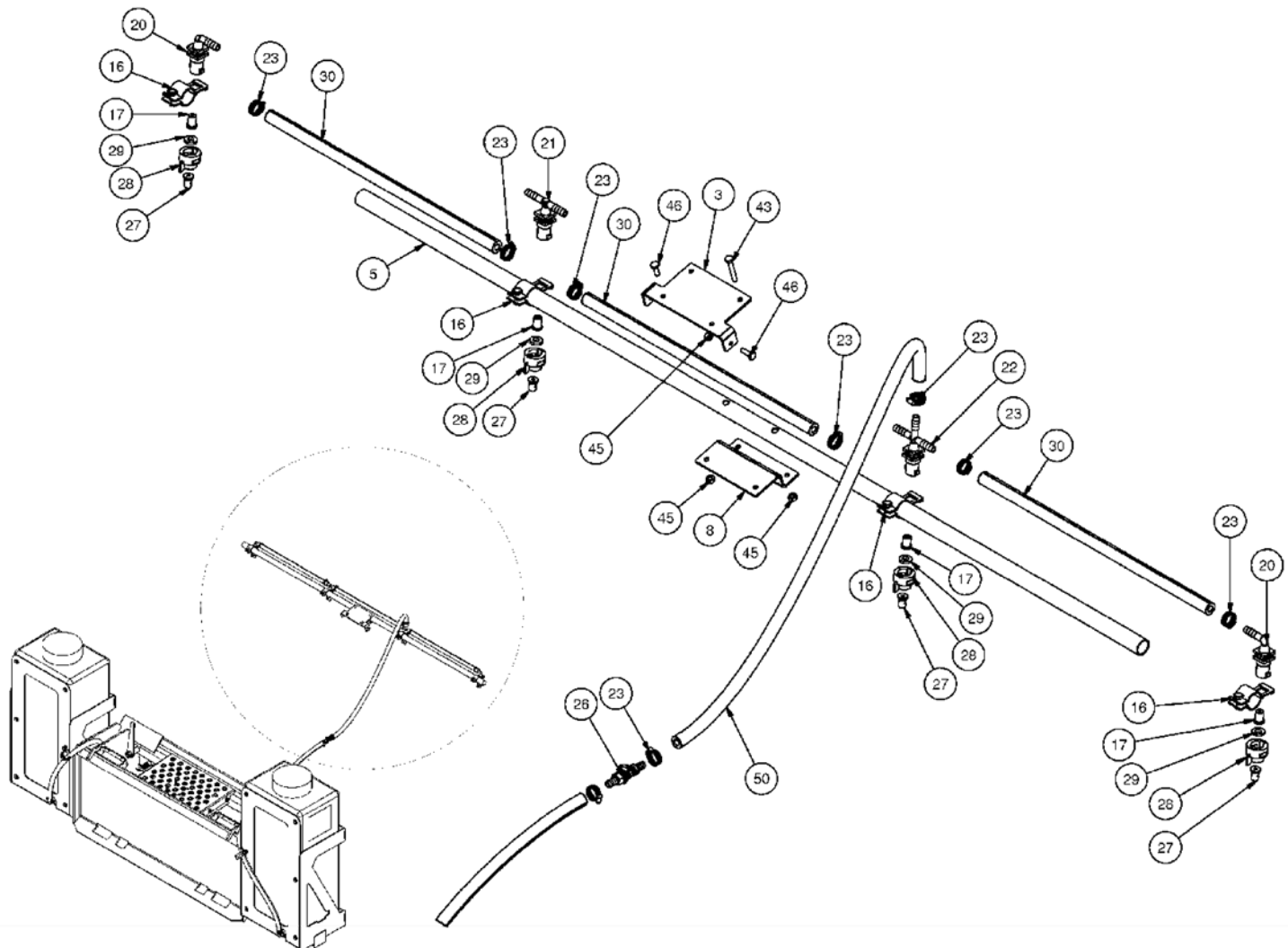
Torque values calculated from formula $T = KDF$

where: $K=0.15$ for "lubricated" conditions

$K=0.20$ for "dry" conditions

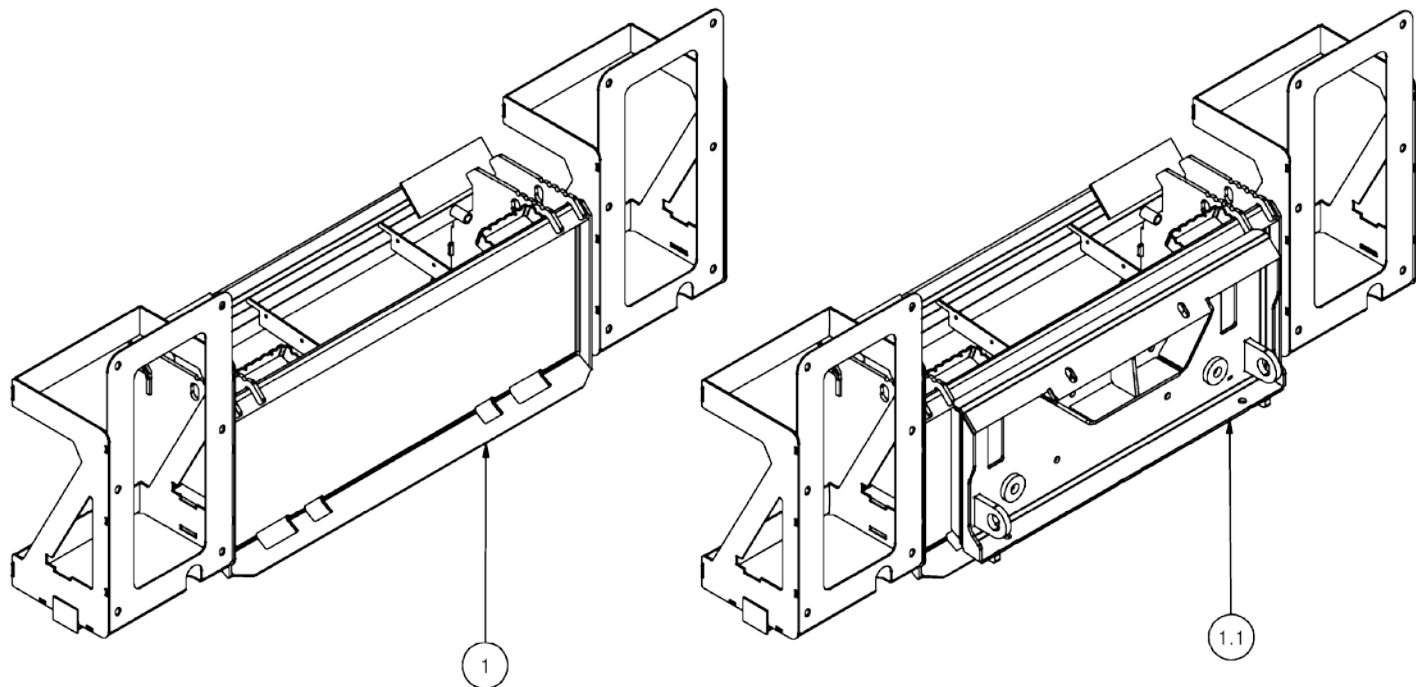
PARTS INFORMATION

ITEM	QTY	PART NO.	DESCRIPTION	STOCK NO.
3	1	318646	BRKT MNT BOOM REAR PNTD	(318642 UNPAINTED)
5	1	318648	TUBE RD 1 X .834 X 64 W/H PNTD	(318644 UNPAINTED)
8	1	318647	BRKT MNT BOOM FRONT PNTD	(318643 UNPAINTED)
16	4	318645	CLAMP NOZZLE	
17	4	318637	TIP STRAINER	
20	2	318615	SINGLE HOSE SHANK NOZZLE BODY	
21	1	318616	DOUBLE HOSE SHANK NOZZLE BODY	
22	1	318617	TRIPLE HOSE SHANK NOZZLE BODY	
23	16	62003	HOSE CLAMP 0.3125-0.875 WORM	
26	1	318619	CPLR QUICK 3/8 HB W/CHECK	
27	4	318638	TIP SPRAY FLOODJET BRASS	
28	4	318633	CAP SPRAY BLACK SM W/GASKET FLOODJET	PART OF 318654
29	4	318620	GASKET TIP EPDM	PART OF 318654
30	3	318665	HOSE 3/8 X 19	NZL BODY CONNECTIONS
43	2	13802	BOLT HEX	1/4 X 1-3/4 NC GR 5
45	6	37210	NUT REV LOCK	1/4 NC
46	4	13003	BOLT HEX	1/4 X 3/4 NC GR 5
50	1	318664	HOSE 3/8 X 43	CPLR TO BOOM

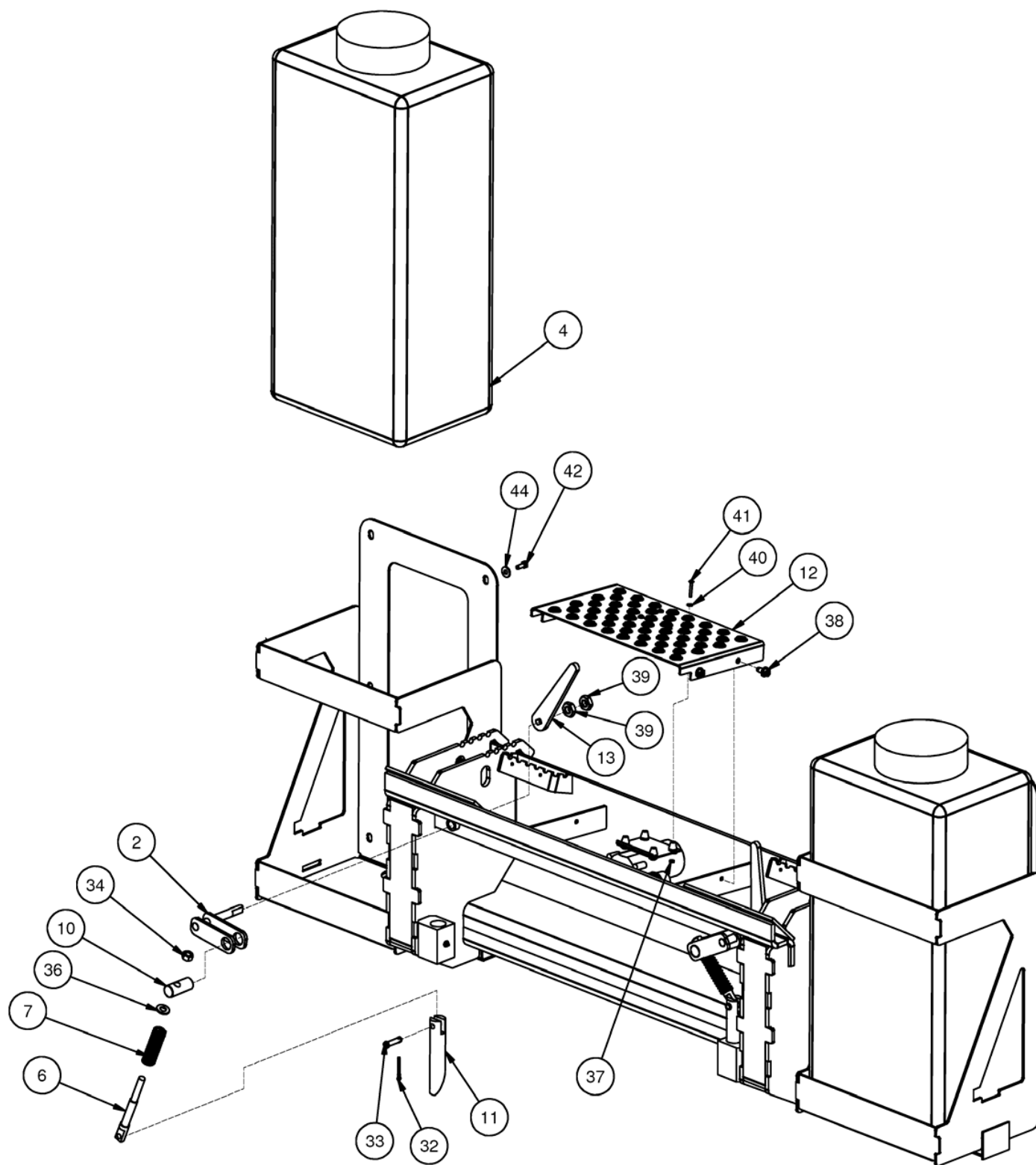


PARTS INFORMATION

ITEM	QTY	PART NO.	DESCRIPTION	STOCK NO.
1	1	318600	MOUNT FRAME TANK W/A	
1.1	1	422173	MOUNT FRAME TANK MULTIHOOG W/A	MULTIHOOG MOUNT ONLY
2	2	311201	LATCH PIN LIFT W/A	
4	2	318631	TANK WATER UPRIGHT W/LID	
6	2	311224	PIN LIFT LINKAGE	
7	2	300458	SPRING COMP 1.0 OD X 3.5	
10	2	311223	PIN ROTATING	
11	2	311225	PIN LATCH	
12	1	318649	BRKT PLATFORM STEP PNTD	
13	2	311231	PLATE HANDLE PAINTED	
32	2	65105	PIN COTTER 5/32 X 1-1/2	
33	2	300459	PIN CLEVIS 3/8 x 1.5 Z	
34	2	37214	NUT REV LOCK	1/2 NC
36	2	33086	WASHER FLAT SAE 1/2 X 1.06 OD	
37	4	36024	NUT M/S #8	
38	4	32467	BOLT THDCUT FLG	3/8 X 3/4 NC
39	4	36214	NUT HEX JAM	5/8 NC
40	4	33072	WASHER FLAT SAE #8	
41	4	28909	SCREW MACHINE 8-32 X 1-1/4	
42	10	13053	BOLT HEX	5/16 X 3/4 NC GR 5
44	10	33006	WASHER FLAT	5/16"
51	1	318656	HRN WATER KIT 12V	NOT SHOWN

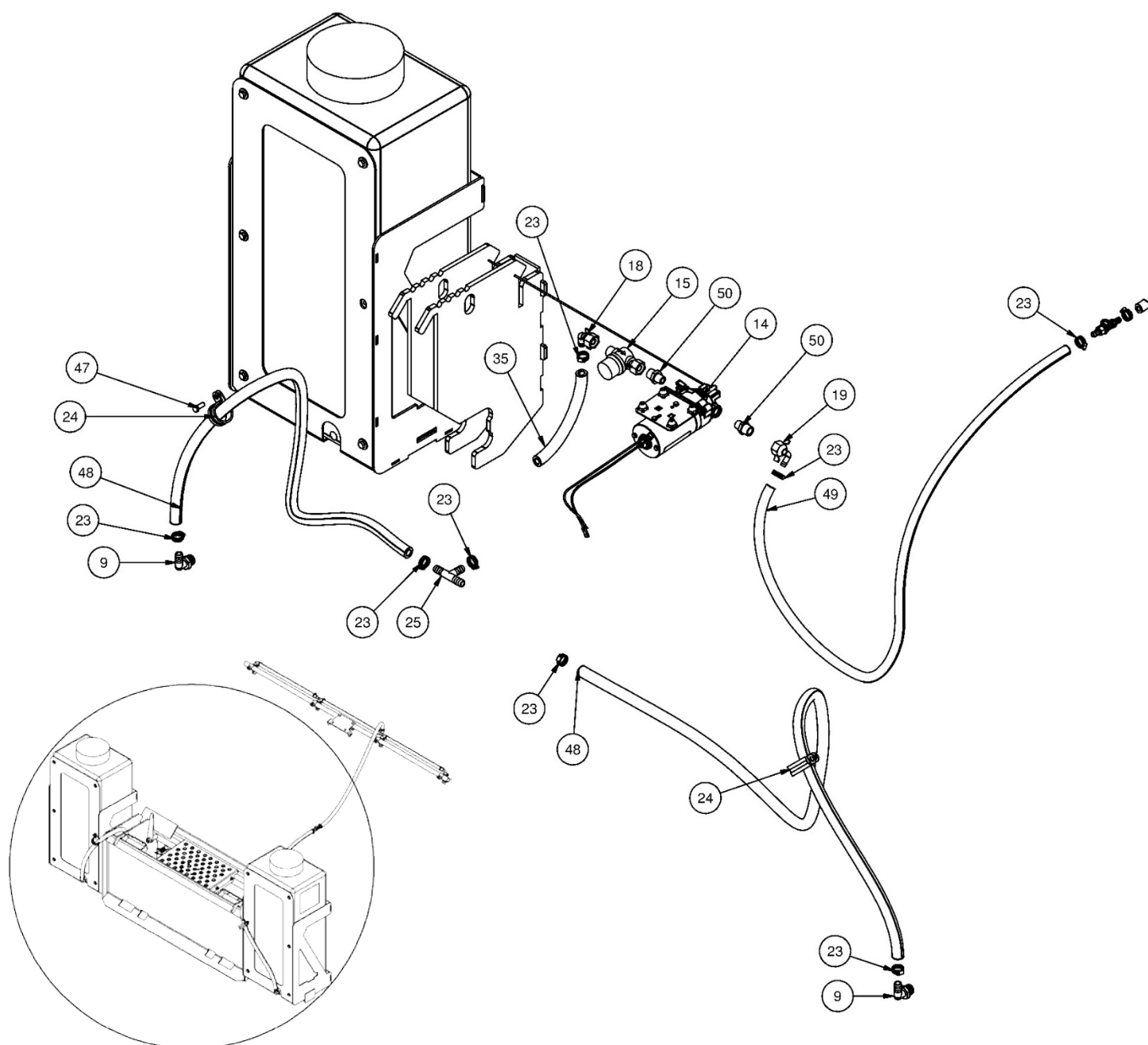


PARTS INFORMATION



PARTS INFORMATION

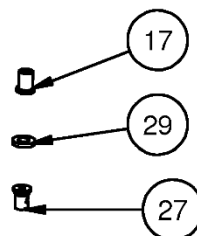
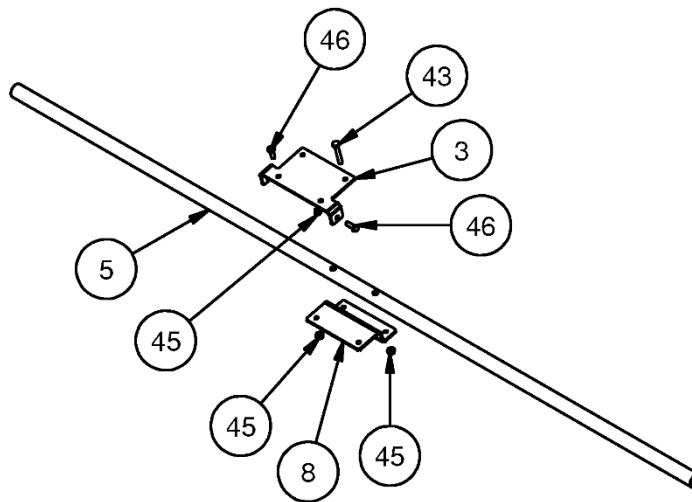
ITEM	QTY	PART NO.	DESCRIPTION	STOCK NO.
9	2	318612	ELB 1/2 MPT 1/2 HB NYLON	
14	1	318658	PUMP WATER ASSM V2	REPLACED 318610
	1	318610	WATER PUMP ASSM	OBSOLETE
15	1	318611	INLET STRAINER HEX WING	1/2 NPS-M X 1/2 NPT
18	1	318613	SW FITTING ELBOW 1/2 BARB POLY	
19	1	318614	SW FITTING ELBOW 3/8 BARB POLY	
23	16	62003	HOSE CLAMP 0.3125-0.875 WORM	
24	2	315639	CLAMP HOSE 1-1/2 (R CLAMP)	
25	1	318618	TEE 1/2 HB X 1/2 HB X 1/2 HB	
35	1	318662	HOSE 1/2 X 10	TEE TO PUMP
47	2	13053	BOLT HEX	5/16 X 3/4 NC GR 5
48	2	318661	HOSE 1/2 X 60	TANK TO TEE
49	1	318663	HOSE 3/8 X 54	PUMP TO CPLR
50	2	318659	ADPT STR 3/8 MPT X 1/2 MPT NYLON	



PARTS INFORMATION

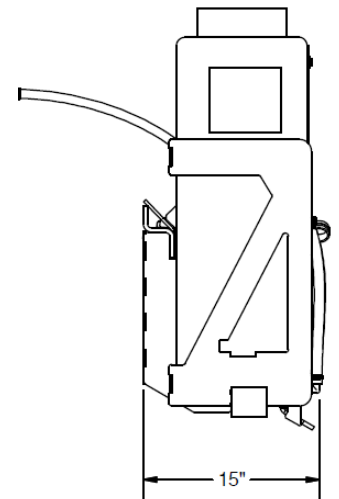
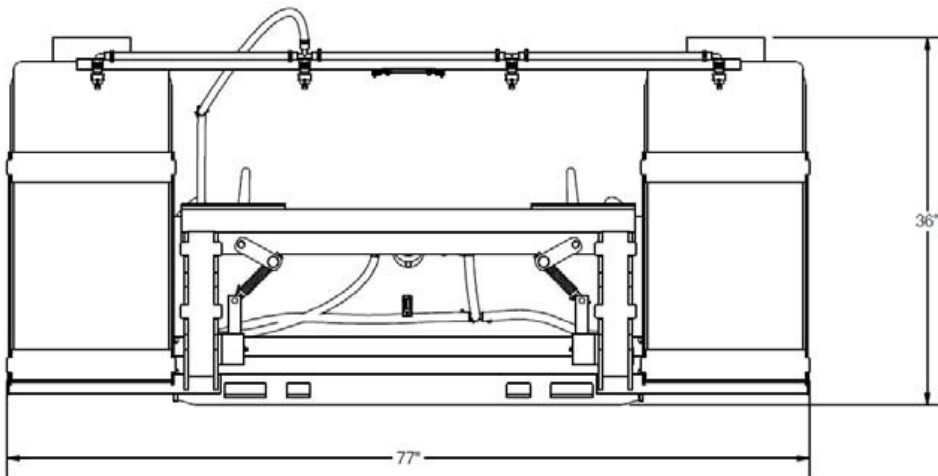
ITEM	QTY	PART NO.	DESCRIPTION	STOCK NO.
	1	318601	KIT PARTS SPRAY BOOM	
3	1	318646	BRKT MNT BOOM REAR PNTD	(318642 UNPAINTED)
5	1	318648	TUBE RD 1 X .834 X 64 W/H PNTD	(318644 UNPAINTED)
8	1	318647	BRKT MNT BOOM FRONT PNTD	(318643 UNPAINTED)
43	2	13802	BOLT HEX	1/4 X 1-3/4 NC GR 5
45	6	37210	NUT REV LOCK	1/4 NC
46	4	13003	BOLT HEX	1/4 X 3/4 NC GR 5

ITEM	QTY	PART NO.	DESCRIPTION	STOCK NO.
	1	318602	KIT PARTS TIP REPLACEMENT	
17	4	318637	TIP STRAINER	
27	4	318638	TIP SPRAY FLOODJET BRASS	
29	4	318620	GASKET TIP EPDM	PART OF 318654



GENERAL SPECIFICATIONS

Tank Capacity	40 gallons total (20 gal per tank)
Tip Flow	0.27 GPM
Number of Tips	4
Spraying Time (Full)	40 minutes
Pump Type	Self-priming diaphragm
Max Current Draw	6 Amps
Power Source	12V cigarette plug
Operating Weight (Tanks Full)	945 lbs.
Overall Height	36"
Overall Width	77"
Overall Length	15"



All dimensions are in INCHES.

LIMITED WARRANTY

Erskine Attachments LLC warrants each new machine manufactured by us to be free from defects in material and workmanship for a period of twenty-four (24) months from date of delivery to the original purchaser.

Our obligation under this warranty is to replace free of charge, at our factory or authorized dealership, any part proven defective within the stated warranty time limit.

All parts must be returned freight prepaid and adequately packaged to prevent damage in transit.

This warranty does not cover:

1. New products which have been operated in excess of rated capacities or negligence
2. Misuse, abuse, accidents or damage due to improperly routed hoses
3. Machines which have been altered, modified or repaired in any manner not authorized by our company
4. Previously owned equipment
5. Any ground engaging tools in which natural wear is involved, i.e. tooth tips, cutting teeth, etc.
6. Normal maintenance
7. Fork tines
8. Hydraulic motors that have been disassembled in any manor

In no event will the Sales Representative, Dealership, Erskine Attachments LLC, or any other company affiliated with it or them be liable for incidental or consequential damages or injuries, including but not limited to the loss of profit, rental or substitute equipment or other commercial loss. Purchaser's sole and exclusive remedy being as provided here in above.

Erskine Attachments LLC must receive immediate notification of defect and no allowance will be made for repairs without our consent or approval.

This warranty is in lieu of all other warranties, express or implied by law or otherwise, and there is no warranty of merchantability or fitness purpose.

No agent, employee, or representative of Erskine Attachments LLC has any authority to bind Erskine Attachments LLC to any warranty except as specifically set forth herein. Any of these limitations excluded by local law shall be deemed deleted from this warranty; all other terms apply.

This warranty may not be enlarged or modified in any manner except in writing signed by an executive officer of Erskine Attachments LLC to improve its products whenever it is possible and practical to do so. Erskine Attachments LLC reserves the right to make changes and or add improvements at any time without incurring any obligation to make such changes or add such improvements to products previously sold.

Erskine Attachments LLC
P.O. Box 1083 Alexandria, MN 56308
Phone (218) 435-4045 Fax (218) 435-5293



P/N 318660
Erskine Attachments LLC

Date Printed: 5/31/2022

Printed in U.S.A.